

We are a critical component manufacturer specializing in complex 3,4 and 5 axis machining of critical components.

MEDICAL INDUSTRY



INDUSTRIES SERVED:

- MEDICAL PRODUCTS
- AEROSPACE PRODUCTS
- COMPLEX INDUSTRIAL PRODUCTS
- ASSEMBLY

ISO 9001:2015 AS9100D

CAMTECH
VISION for the FUTURE



FACILITIES



Facilities over 37,000 sqft.
5,000 Administration
8,000 Quality and Engineering
24,000 Manufacturing and Assembly

QUALITY PROGRAMS

FDA Registered
ISO 9001:2015 and AS9100D Registered
California Lic. Device Mfg. Registered

QUALITY & TEST SYSTEMS



Zeiss CMM (6) - Lab Level Inspection and Test Equipment



ASSEMBLY



Next Level Assembly
Shipset Kitting



Class III Ultrasonic
Electro-Mechanical Assembly

MANUFACTURING TECHNOLOGIES

High Precision Micro-Machining
25,000 RPM High Speed Machining
3D Surface 3, 4 and 5 Axis Machining
52 CNC Machines
Shrink Fit Tool Holding
Shipset Production



EXOTIC MATERIALS

Titanium
Inconel
Cobalt
Ultem
Radal
300 and 400 Series of Stainless Steel

MEDICAL, LAB AND TECH SYSTEMS

Vascular Systems

Artificial Heart Components, Blood Pumps,
VAD and IVAD Implant Systems

Surgical and Diagnostic Systems

Robotic Assisted Surgical Device Components

Laparoscopic Instruments

Cryogenic Pump Assemblies



FINE DETAILED FINISHING

Specialized Team and Equipment designed to achieve up to 4 micron inch surface finishes on both cylindrical and 3D machined surfaces. Blade and Vane product lines achieving up to 8 micron finishes

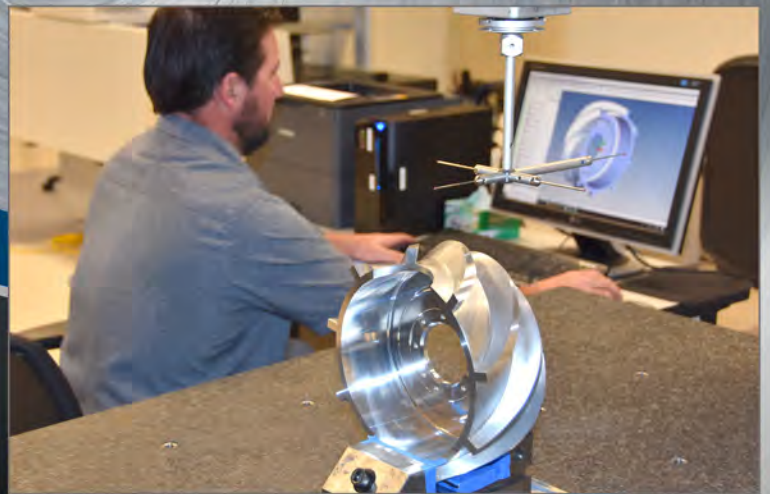


ENGINEERING AND VALUE-ADDED SERVICES

CAD

Product Design and Development

SOLIDWORKS, MASTERCAM, NCL
CNC Programming (3,4 and 5 Axis)



MANUFACTURING PROCESS ENGINEERING - TOOLING and FIXTURING

In order to deliver consistent competitive pricing, CAMTech invests heavily into Inspection and Production Tooling (soft, hard, modular).

CAMTech maintains an engineering staff specializing in tool design and manufacturing process development.

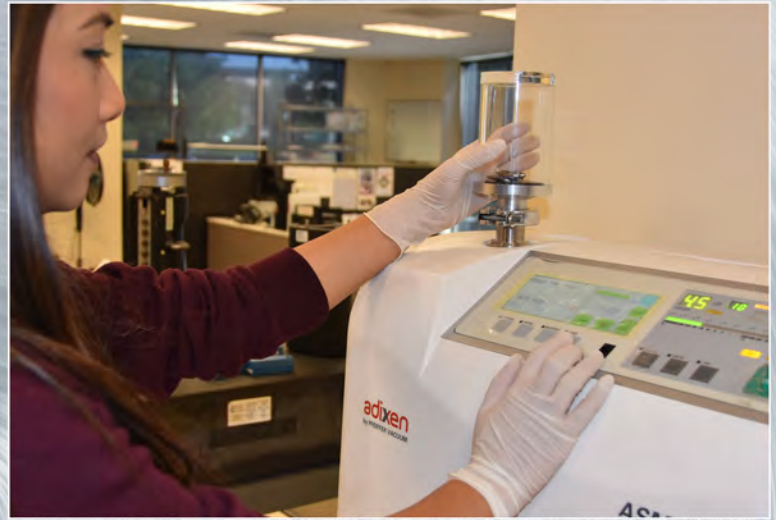


SPECIALIZED and SUPPORT SERVICE

Hermatic Sealing
Electron Beam Welding
Helium Leak Test
Kennametal Extrude Hone (2)



Zeiss Accura Coordinate Measuring Machinery

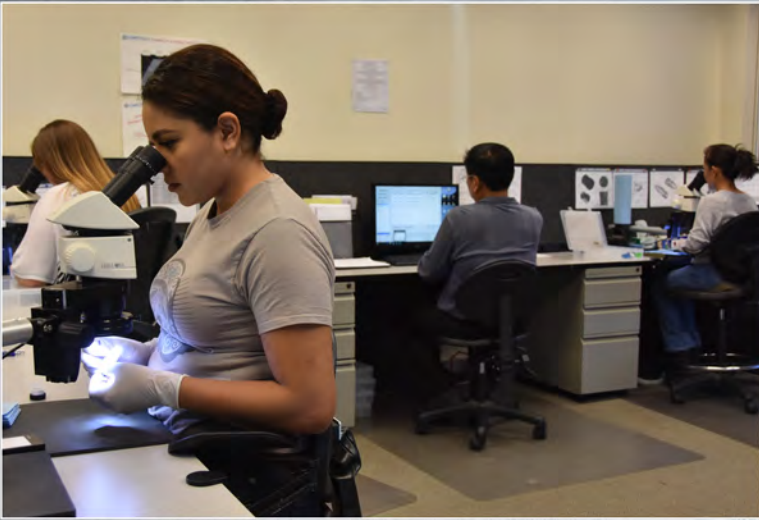


Leak Test of Hermetic Welded Assemblies



**Extrude Hone
Abrasive Flow Machining**

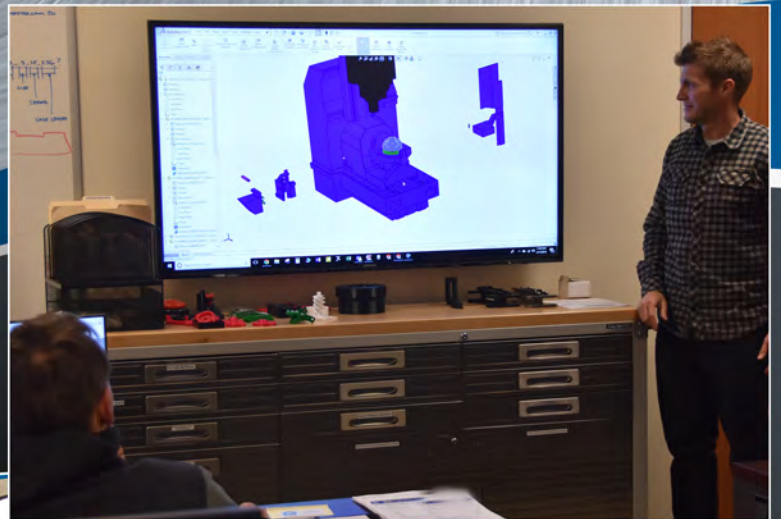


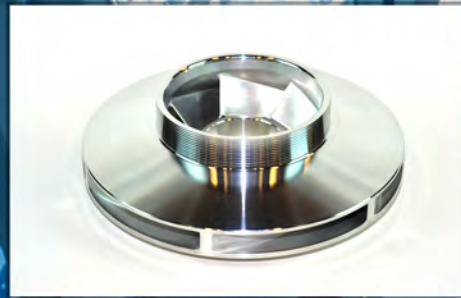
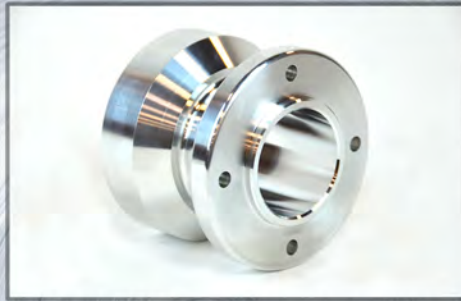


Inspection Department



Engineering Support





Working in stainless steel, cobalt and titanium alloys, as well as all the aircraft grade aluminum alloys, gives us a diverse view of many different programs.



Cardio Vascular Impeller



Cardio Vascular Stator



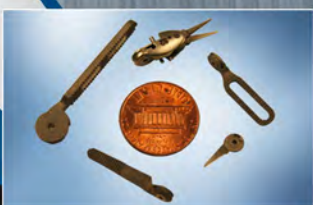
Ultrasound Transducer and Needle Guide



Orthopedic Bone Plate



Clip on Needle Guide



Medical Instruments



Cardio Implant



Syringe Evacuator



Mitsui Seiki Vertex 550-5X
5 Axis Machining Centers



Matsura MAM72-35V
5 Axis Machining Centers



Platinum Supplier Awards from
ST. JUDE MEDICAL - MCS Division - 2016
THORATEC CORP. - 2015
ABBOTT Heart Failure - 2017

8710 Research Drive, Irvine, CA 92618
Tel: 949-263-8911 - Fax: 949-263-8915

www.camtechcorp.com